



CITY OF NEW BEDFORD  
JONATHAN F. MITCHELL, MAYOR

CITY CLERK

2016 AUG 17 P 4:07

CITY CLERKS OFFICE  
NEW BEDFORD, MA

August 17, 2016

LATE FILE

City Council President Linda M. Morad and  
Honorable Members of the City Council  
133 William Street  
New Bedford, MA 02740

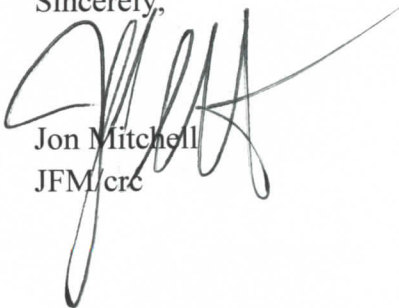
Dear Council President Morad and Honorable Members:

I submit for your consideration a request to donate the thirty-six foot Coast Guard Motor Lifeboat that the City currently owns to the Hull Lifesaving Museum in Hull, MA. I have been assured that the Museum will give due credit to the City of New Bedford for its donation when the vessel goes on display.

The enclosed letter from DFFM Commissioner Ken Blanchard provides a more detailed explanation of the transaction and the rationale for it. Mr. Blanchard will also be in attendance at the August 18<sup>th</sup> Council meeting to answer any questions Councilors may have.

Thank you for your consideration of this matter.

Sincerely,



Jon Mitchell  
JFM/crc



## DEPARTMENT OF FACILITIES AND FLEET MANAGEMENT

KENNETH F. BLANCHARD  
DIRECTOR

CITY OF NEW BEDFORD  
JONATHAN F. MITCHELL, MAYOR

Mayor, Jonathan F. Mitchell

August 17, 2016

RE: 36' Coast Guard Motor Lifeboat

Mayor Mitchell,

The City currently owns a 36' Coast Guard Motor Lifeboat. The boat, which was recently moved to the city owned lot on East Rodney French Boulevard had previously been stored at city yard for many years uncovered, and has been subjected to severe weather conditions which caused it to deteriorate greatly.

The Hull Lifesaving Museum recently contacted me to ask if New Bedford would consider donating it to their museum. They have a staff experienced with wooden boat building and restoration, as well as a crew of volunteers. They also have covered outdoor space where the boat would be stored. Long term there is the possibility of indoor storage in their historic Coast Guard Boathouse. The Hull Lifesaving Museum has agreed to erect a plaque to acknowledge New Bedford's gift in the area of the boat.

I have contacted Ed Anthes-Washburn at HDC and they have no use for this vessel. Brian Joseph, Marine Superintendent for HDC contacted the Coast Guard Auxiliary and they have no interest in the boat.

I respectfully request that this item be placed on the City Council Agenda for August 18, 2016 to ask for a vote to donate the boat to the Hull Lifesaving Museum where it will be preserved as a historic artifact to be viewed by future generations.

Sincerely,

A handwritten signature in dark ink, appearing to read "Kenneth F. Blanchard". The signature is fluid and cursive, with the first name being the most prominent.

Kenneth F. Blanchard, Director  
Facilities and Fleet Management

# Kenneth Blanchard

---

**From:** Victoria [victoria@hulllifesavingmuseum.org]  
**Sent:** Monday, March 14, 2016 3:06 PM  
**To:** Kenneth Blanchard  
**Subject:** 36' Motor Life Boat

Dear Mr. Blanchard,

Michael DeKoster, the Hull Lifesaving Museum's maritime coordinator, suggested that I reach out to you. I am the museum's Curator and a member of Hull's Coast Guard City committee.

We have heard that the City of New Bedford might have a 36' Coast Guard Motor Lifeboat available for a possible transfer or donation?

We are looking into acquiring a 36' MLB for restoration and exhibit. It would be a great compliment to the 1936 Coast Guard boathouse, from which we operate our rowing programs and which we are planning to restore to historical standards.

The Town of Hull was recently designated a National Coast Guard City in recognition of our longstanding and enduring connections to the Coast Guard. This MLB restoration and exhibit would be part of our Coast Guard City efforts.

Could you please let me know whether the City of New Bedford is, in fact, interested in finding a new home for the 36' MLB?

Thanks very much!

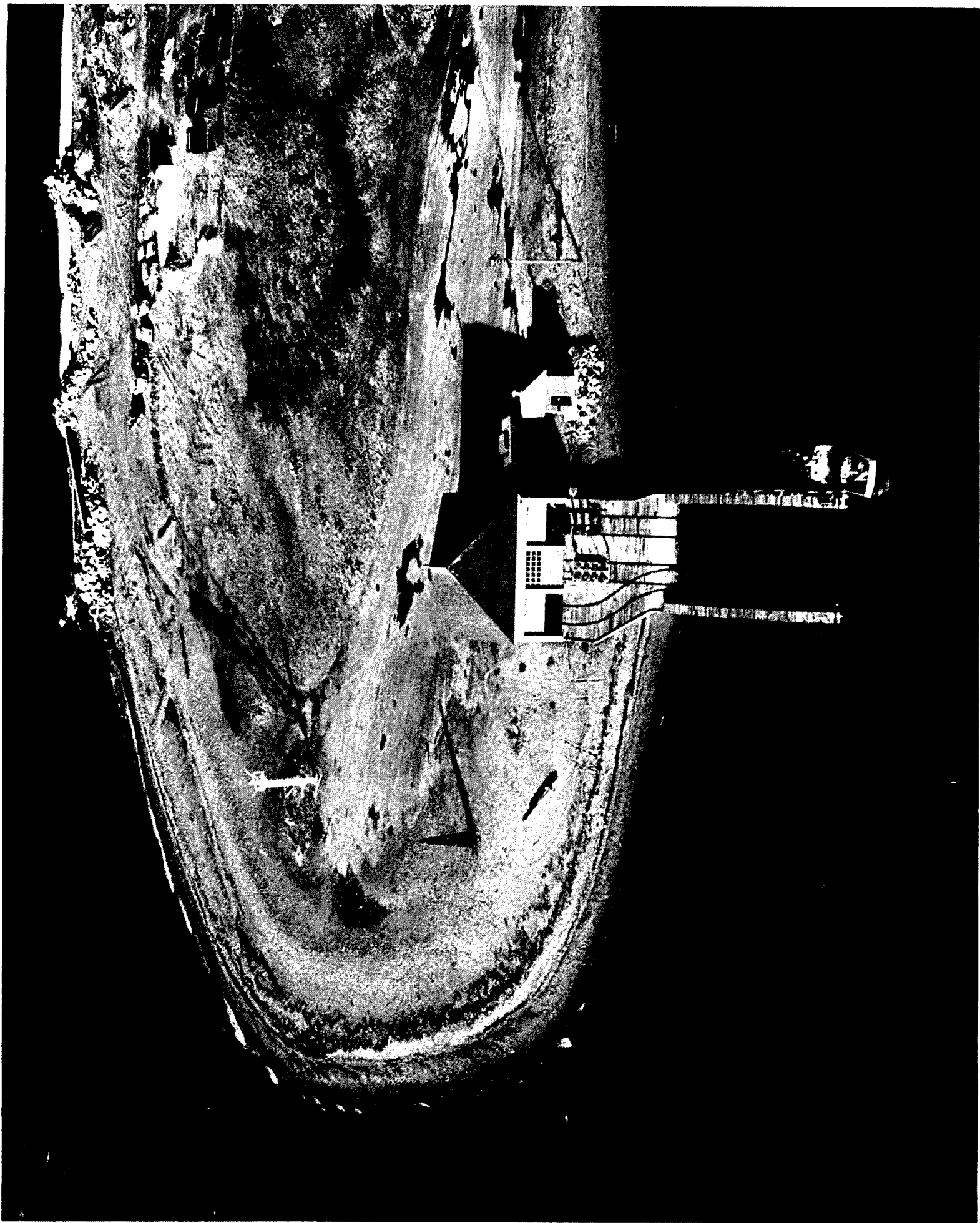
Victoria

Victoria Stevens  
Curator  
Hull Lifesaving Museum  
1117 Nantasket Avenue  
PO Box 221  
Hull, Massachusetts 02045  
781-925-5433  
[www.hulllifesavingmuseum.org](http://www.hulllifesavingmuseum.org)







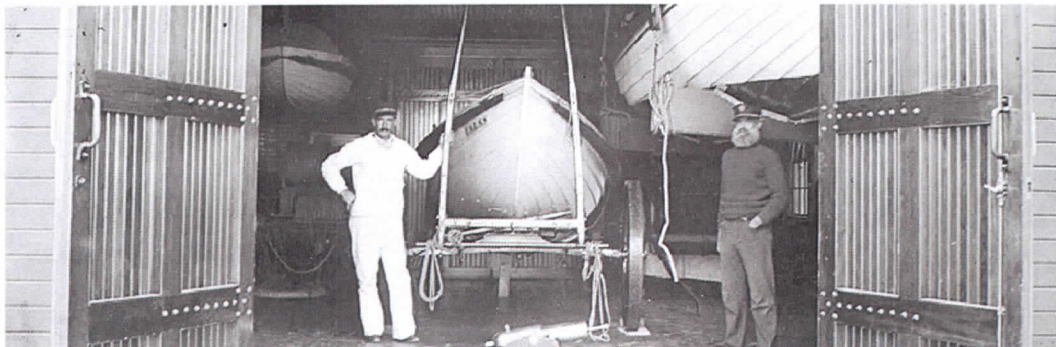








# HULL LIFESAVING MUSEUM

[About Us](#) [Museum Shop](#) [Donate](#) [Get Involved](#)
[Donate](#)
[Exhibits & Collections](#)
[Museum Programs and Workshops](#)
[Open Water Rowing](#)
[Calendar and Events](#)


## ILLUMINATION COMMEMORATIVE FLARE SPONSOR LIST



## Sumptuous Summer Farm to Table Dinner Saturday, August 13, 2016 SOLD OUT



## Summer Lego Club Tuesday - Thursday August 16 - August 18, 2016

## NANTASKET BEACH LECTURE SERIES

### About Us

The Hull Lifesaving Museum is so much more than a museum. Founded in 1978, we are an essential part of the community that for 36 years has provided not only crucial lessons from our maritime heritage, but also life-changing and sometimes life-saving youth development experiences. Our mission celebrates the lifesaving spirit of Skills, Courage, and Caring, and the relevance of our history to our constituents' daily lives. As one of our region's leading cultural organizations and agents of social change, HLM challenges its participants to draw the best from themselves by combining social services and experiential education with historical preservation and interpretation.

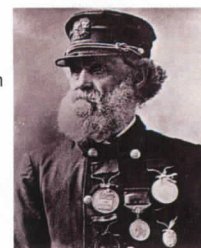
HLM's year-round education and recreation programs, serving a diverse constituency, 75% of whom are underserved youth from metropolitan Boston, are broadly recognized as best practice models. HLM's program design respects the needs, expectations, and skill level of each participant.

### Mission

The driving principles of the 19th century coastal lifesavers - Skills, Courage, and Caring - are the foundations of the Hull Lifesaving Museum's commitment to impact individual lives for the better. We foster a community dedicated to the preservation of Boston Harbor's rich maritime heritage and lifesaving traditions through exhibits, collections, open-water rowing programs and stewardship of our historic sites.

### History

The Hull Lifesaving Museum (HLM) is housed in the former Point Allerton US Lifesaving Station opened in 1889 under the leadership of Joshua James who, with his crews of the Massachusetts Humane Society and US Lifesaving Service and the Revenue Cutter Service, were merged to form the US Coast Guard. Joshua James is considered a "father" of the US Coast Guard.



### Contact Us

General Inquiries: [info@hulllifesavingmuseum.org](mailto:info@hulllifesavingmuseum.org)

Telephone: (781) 925-5433



The Wonder Years: Hull Yacht  
Club 1880-1905  
with Bill Bradford  
August 16, 2016  
at Hull Yacht Club



Stephen Puleo:  
American Treasures  
September 15, 2016  
Nantasket Beach Resort



U.S. Coast Guard Band  
Performance  
September 14, 2016  
Hull High School  
6:00 pm



Blue Grass Performance  
September 14, 2016  
Hull Lifesaving Museum  
7:30 pm



Annual Meeting  
with Guest Speaker  
Whit Perry  
September 24, 2016  
3:00 pm

Fax: (781) 925-0992

Mail: Hull Lifesaving Museum  
1117 Nantasket Avenue  
P.O. Box 221  
Hull, MA 02045

Boston Rowing Center: (617) 233-7016

### Museum Staff

**Peter Wild**, Executive Director  
[peter@hulllifesavingmuseum.org](mailto:peter@hulllifesavingmuseum.org)

**Ed McCabe**, Director of Maritime & New Program Development  
[ed@hulllifesavingmuseum.org](mailto:ed@hulllifesavingmuseum.org)

**Corinne Leung**, Director of Advancement and Communications  
[Corinne@hulllifesavingmuseum.org](mailto:Corinne@hulllifesavingmuseum.org)

**Victoria Stevens**, Curator  
[Victoria@hulllifesavingmuseum.org](mailto:Victoria@hulllifesavingmuseum.org)

**Michael De Koster**, Maritime Coordinator  
[Michael@hulllifesavingmuseum.org](mailto:Michael@hulllifesavingmuseum.org)

### Board of Directors

Robert MacIntyre, Chair/President  
Nowell Bloomenthal, Vice President  
Paul Carlson, Treasurer  
Dolly Snow Bicknell, Clerk  
Chris Basler  
Steven Clancy  
Maureen Gillis  
Joan Meschino  
Chad Wolfe

### Job Opportunities

No Job Openings At This Time

### Our Sites

#### Point Allerton Station

The headquarters of the Hull Lifesaving Museum is located at the Point Allerton U.S. Lifesaving Station in Hull, MA. The museum exhibits are open to the public year round.

#### Windmill Point

Windmill Point Boathouse (Hull) is the base of our South Shore Maritime Program.

#### Boston Rowing Center

Our site for waterfront operations and our rowing fleet is located in Fort Point Channel.

### Plan Your Museum Visit Address and Phone

General Inquiries: [info@hulllifesavingmuseum.org](mailto:info@hulllifesavingmuseum.org)

Telephone: (781) 925-5433  
Fax: (781) 925-0992





Maritime History Symposium  
Boston Light, 1716 - 2016  
October 15, 2016  
9:00 am - 3:00 pm  
Nantasket Resort Hotel



Shining Beacon, Island Home:  
Boston Light, 1716 - 2016  
June - September 2016  
Point Allerton Station



Join Us for Team Building  
 Adventures

### Hours of Operation

#### Point Allerton Life-Saving Station Hours:

January - April: Monday - Thursday, 10 am - 4 pm.

May - December: Monday - Thursday and Saturday, 10 am - 4 pm.

July - August: Sunday, 10 am - 4 pm.

Additional hours and guided tours available by appointment.

#### Office Hours:

Monday - Thursday 9 am - 5 pm

Friday - 9 am - 1 pm

### Directions

#### Directions to: **Point Allerton U.S. Lifesaving Station**

1117 Nantasket Avenue, Hull, MA

#### From Boston:

Take Southeast Expressway South to Route 3 South. Follow Rte. 3 South to Exit 14 for Route 228 (Rockland/Nantasket). Take a left off the exit ramp and follow Rte. 228 into Hull where it becomes Nantasket Avenue. Follow Nantasket Avenue (ocean on your right) for approximately 5 miles, about a seven-minute drive through town. After crossing a narrow isthmus, bear right at the distinctly modern Wastewater Treatment Facility. The Museum, a green clapboard building with cream trim and a deep red shingle roof directly facing Boston Light, will be the first building on your left. Approximate travel time from Boston: 1 hour and 10 minutes.

#### From the South:

Take Route 3 North to Exit 14 for Route 228 (Rockland/Nantasket). Take a right off the exit ramp and follow Rte. 228 into Hull where it becomes Nantasket Avenue. Follow Nantasket Avenue (ocean on your right) for approximately 5 miles, about a seven-minute drive through town. After crossing a narrow isthmus, bear right at the distinctly modern Wastewater Treatment Facility. The Museum, a green clapboard building with cream trim and a deep red shingle roof directly facing Boston Light, will be the first building on your left. Approximate travel time from Exit 14 to the Museum: 25 minutes.

#### Directions to: **Windmill Point Boathouse**

185 Main Street, Hull, MA

#### Directions to: **Boston Rowing Center**

88 Sleeper Street, Boston, MA 02210

Boston Rowing Center is located on the docks of the Barking Crab Restaurant.

*Taking the T is highly recommended as there is rampant construction as well as street closings during weekdays when there is a Marathon Bombing trial in effect. Public parking is also extremely limited during the week, and slightly less limited during the weekend.*

#### Public Transportation:

##### From the Silver Line:

At South Station, take the Silver Line (SL1, SL2, or Silver Line Way) one stop to the Courthouse Station. Exit the station on the right side staircase and straight through the doors. It's a 2 minute walk straight toward the Barking Crab.

##### From the Red Line:

Exit at South Station on the Red Line. Head northwest on Atlantic Ave. and right on Seaport Blvd. About a 10 minute walk.

**From the Blue Line:**

Exit at Aquarium Station on the Blue Line. Head southeast on Atlantic Ave., left on Seaport Blvd. and left onto Sleeper St. About a 12 minute walk.

**From the Orange Line:**

Exit at State Street Station. Head west on Water Street and make a right onto Oliver St. Cross the Moakley Bridge and make a left onto Sleeper St. About a 15 minute walk.

**Driving:**

**From the North via I-93:**

Heading southbound on Interstate 93 towards Boston, take Exit 23 - Purchase St. Stay in the left lane on the exit ramp and turn left at the first set of lights onto Seaport Boulevard. Cross the Evelyn Moakley Bridge and take the first left onto Sleeper St. We're located on the far side of Hotel Envoy which will be directly on the left.

**From the South via I-93:**

Heading northbound on Interstate 93 towards Boston, take Exit 20, toward Logan Airport (I-90 East). Once inside the tunnel stay on the right lane and take the "South Boston" exit. At the top of the ramp exit onto East Service Road. Keep straight past parking lots on both sides then turn left onto Seaport Blvd. Turn right onto Sleeper St. We're located on the far side of Hotel Envoy which will be directly on the left.

**Alternate option from the South:**

Heading north on Interstate 93 towards Boston, take Exit 20 toward the Worcester/South Station exit. Follow signs to Chinatown/South Station. At the bottom of the exit ramp head straight toward South Station on Atlantic Ave. continuing until reaching the Intercontinental Hotel. Turn right just after the hotel onto Seaport Blvd. crossing the Evelyn Moakley Bridge. Turn left onto Sleeper St. We're located on the far side of Hotel Envoy which will be directly on the left.

**From the West via Massachusetts Turnpike:**

Follow the Massachusetts Turnpike/Interstate 90 East to Exit 25 - South Boston.

**From Logan International Airport and Route 1A South:**

Follow the signs towards I-90 West - Ted Williams Tunnel. Take the Ted Williams Tunnel to Exit 24-25 towards South Boston. Keep left at the fork, follow signs to Seaport Blvd/Downtown. Continue onto B St. Turn left onto Northern Ave./Seaport Blvd. then turn right onto Sleeper St. We're located on the far side of Hotel Envoy which will be directly on the left.

**Parking:**

There are public parking meters, \$.25 per 12 minutes. Most are 2-hour limit, but some are 4-hour limit.

There are parking lots that cost close to \$20 and more on Northern Ave., Fan Pier Blvd., Seaport Blvd., East Service Road and Boston Wharf Road.

Here are two reasonable parking options within a 10 minute walk and cost \$5 - weekends only. During the week they cost \$18.

Channelside Parking, 284 A Street, Boston, MA 02127

Necco Street Garage, 38 Necco St., Boston, MA 02210

**Taxi Service:**



Boston Cab (617) 536-2600, Checker Cab (617) 536-7000, Metro Cab (617) 242-8000, Town Taxi (617) 536-5000

### **Admission**

Adults, \$5.00, Seniors, \$3.00.

Children 18 and under, and museum members are free.

### **Accessibility**

The Station Museum is fully accessible on the first floor, with special interpretive materials available.

### **Links and Partners**

#### **Sponsors:**

Bloomenthal & deBastos, LLP

Nantasket Beach Resort & Conference Center

Nantasket Cranberry

One4Three Productions

#### **Partner Organizations:**

3A Marine Services

Allerton Harbor Canvas, LLP

Daley and Woll Marine Joinery and Restoration

Massachusetts Bay Lines

Mass. Bay Maritime Artisans

Massachusetts Marine Trades Association

Poseiden Marine Services, LLC

Steamboat Wharf Marina, Inc.

UMass Boston Division of Marine Operations

### **Visiting the Area**

Hull-Nantasket Chamber of Commerce

Destination Plymouth

Copyright © 2008 Hull Life Saving Museum. All Rights Reserved.