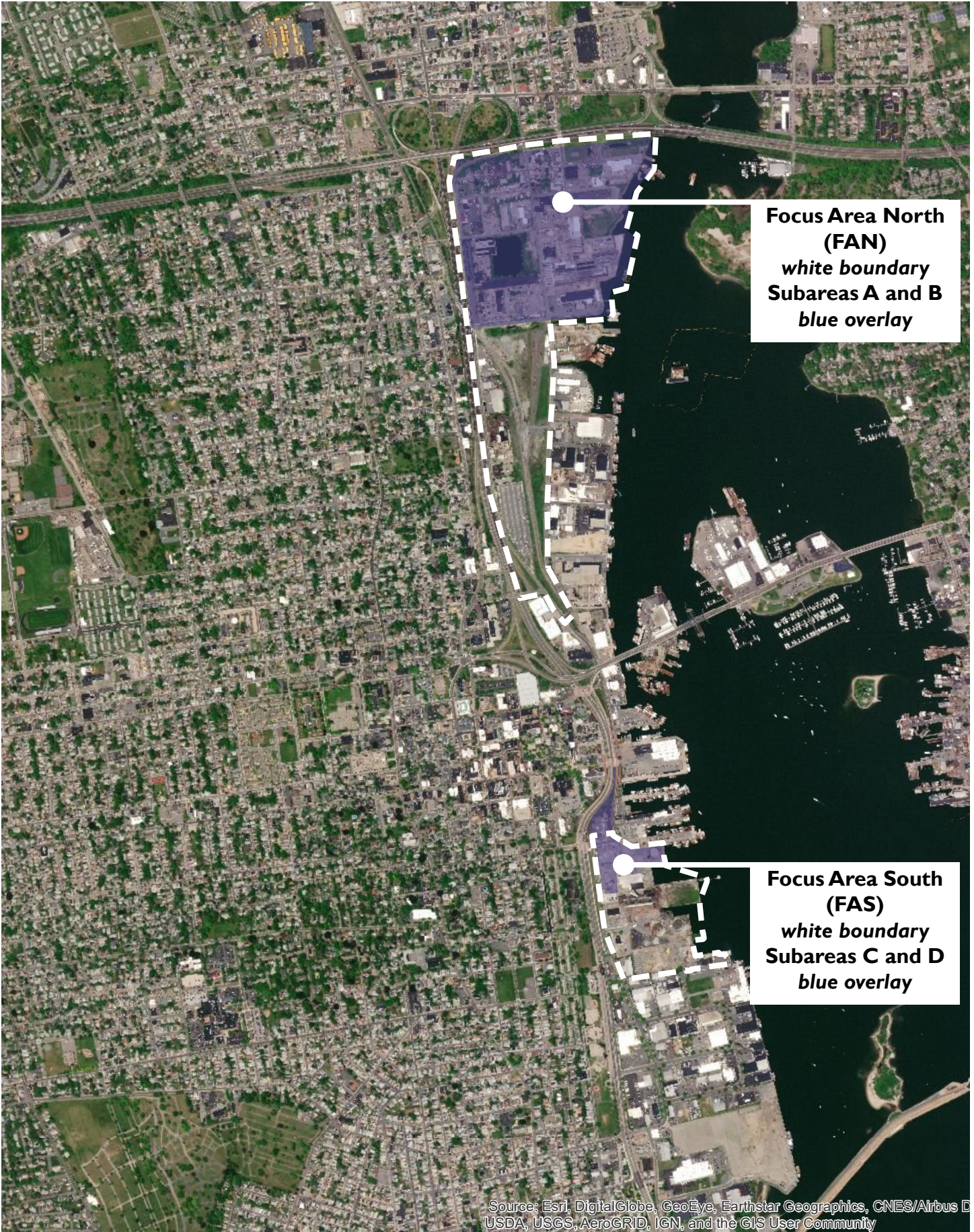


Proposed Waterfront Mixed Use District (WMUD)

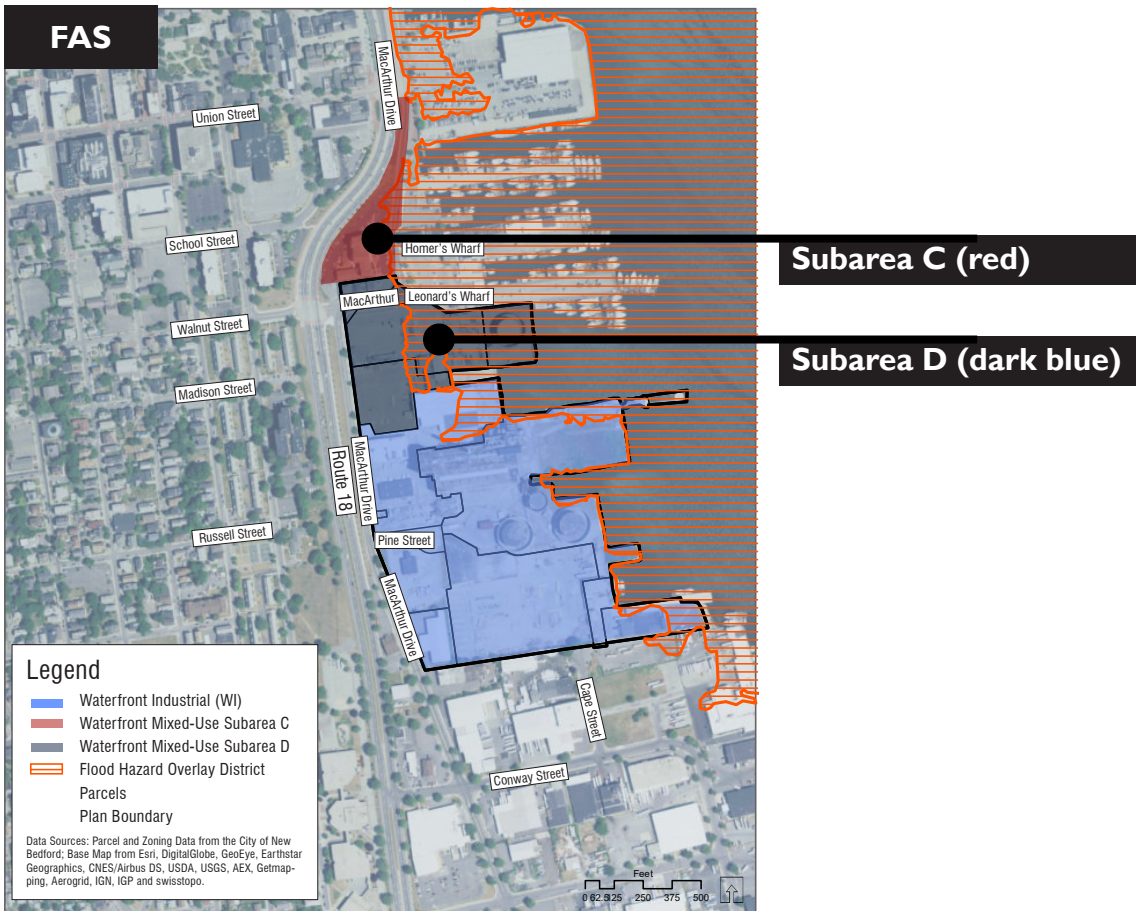
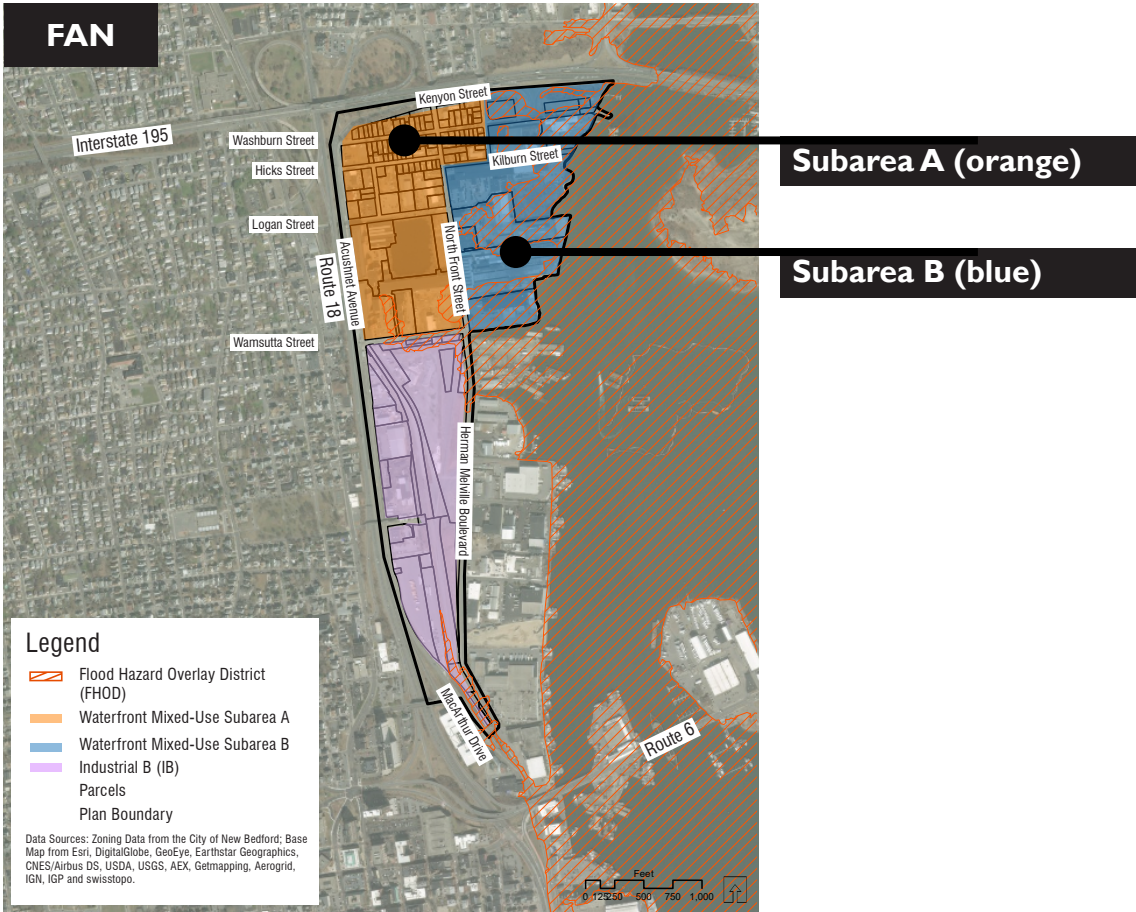


**Focus Area North
(FAN)**
white boundary
Subareas A and B
blue overlay

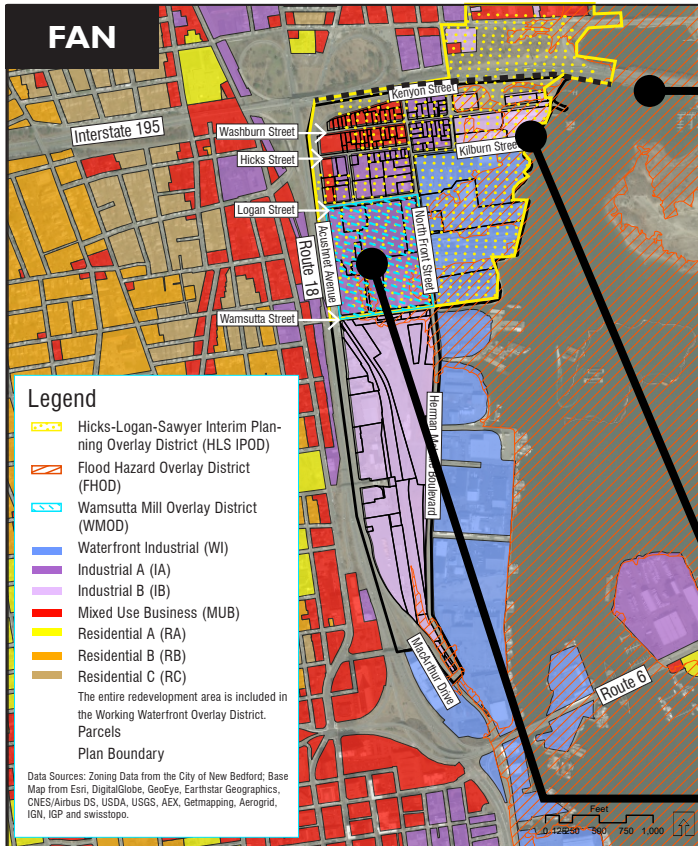
**Focus Area South
(FAS)**
white boundary
Subareas C and D
blue overlay

Source: Esri, DigitalGlobe, GeoEye, Earthstar Geographics, CNES/Airbus D
USDA, USGS, AeroGRID, IGN, and the GIS User Community

Proposed Waterfront Mixed Use District (WMUD): Subarea Detail



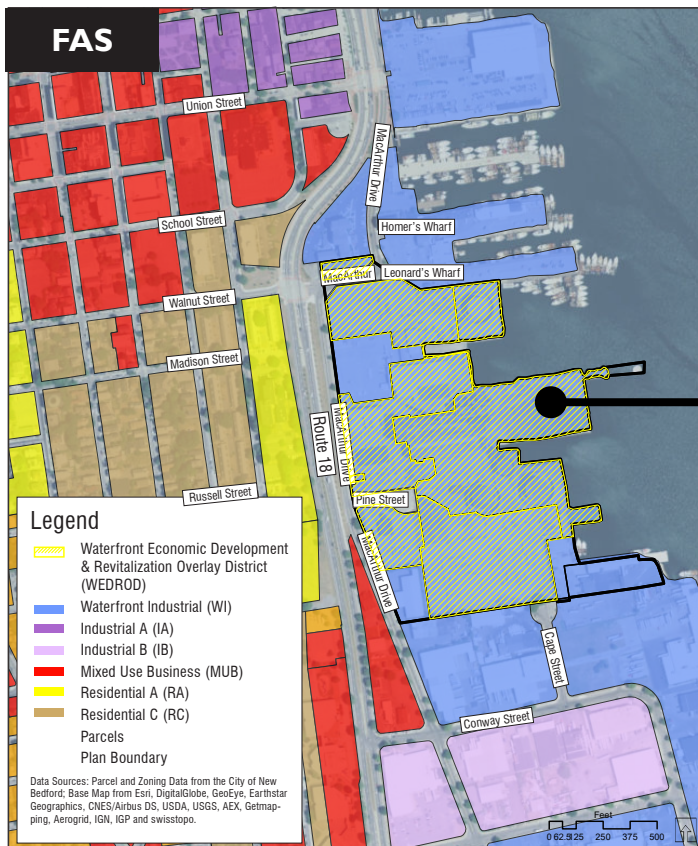
Existing Zoning: Overlay Districts to be Modified/Removed



Hicks-Logan-Sawyer Interim Planning Overlay District (HLS IPOD) to be removed south of I-195. The existing HLS IPOD is indicated by a yellow boundary filled with yellow dots. The black dashed line indicates the new southern boundary of the HLS IPOD.

Industrial B (light purple) subject to Working Waterfront Overlay District. Will no longer be part of

Wamsutta Mill Overlay District (WMOD) will be removed completely. The WMOD is indicated by a light blue boundary filled with blue diagonal lines.



Waterfront Economic Development & Revitalization Overlay District (WEDROD) to be removed completely. The existing WEDROD is indicated by a yellow boundary filled with yellow diagonal lines.