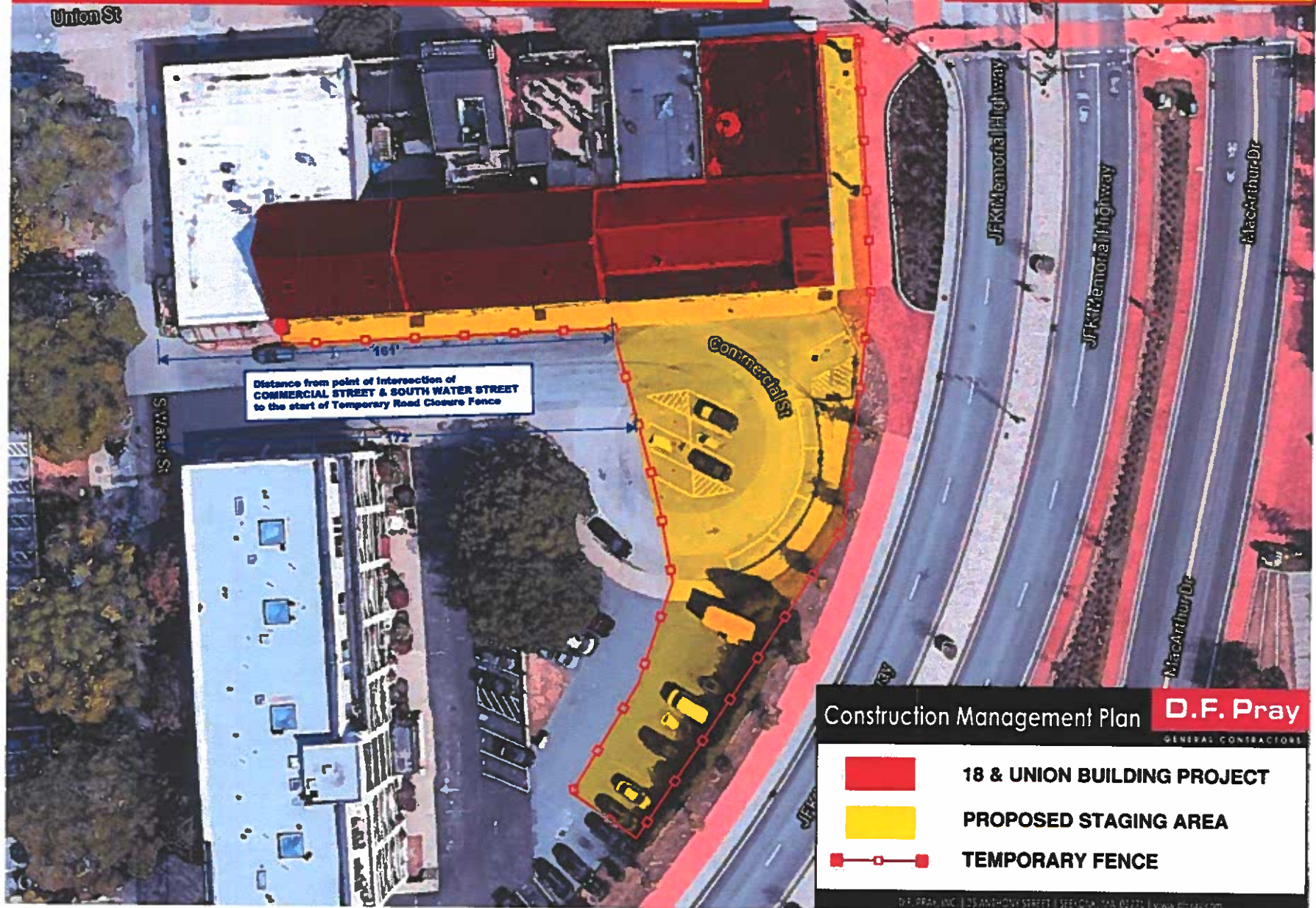


Requesting, that the following street(s) be PARTIALLY CLOSED: A PORTION of COMMERCIAL STREET, starting 161' from the NORTH most point and 172' from the SOUTH most point of intersection with SOUTH WATER STREET to its terminus, and including portions of the sidewalks immediately adjacent to the three buildings on their SOUTH AND EAST elevations. Starting on TUESDAY, MARCH 1, 2022 – THURSDAY, SEPTEMBER 1, 2022, for the purpose of the construction project happening at 21-35 Commercial Street, 13-19 Commercial Street and 24 Union Street.

REV 1 - 02.11.22
DURATION: 6 MONTHS FROM APPROVAL
START: MARCH 1ST 2022
FINISH: SEPTEMBER 1ST 2022



National Register District: Bedford Landing

Requesting, that the following street(s) be PARTIALLY CLOSED: A PORTION of COMMERCIAL STREET, starting 161' from the NORTH most point and 172' from the SOUTH most point of intersection with SOUTH WATER STREET to its terminus, and including portions of the sidewalks immediately adjacent to the three buildings on their SOUTH AND EAST elevations. Starting on TUESDAY, MARCH 1, 2022 – THURSDAY, SEPTEMBER 1, 2022, for the purpose of the construction project happening at 21-35 Commercial Street, 13-19 Commercial Street and 24 Union Street.

REV 1 - 02.11.22
DURATION: 6 MONTHS FROM APPROVAL
START: MARCH 1ST 2022
FINISH: SEPTEMBER 1ST 2022

