



City of New Bedford

IN COMMITTEE

May 24, 2022

The Honorable City Council
133 William Street
New Bedford, MA 02740

Dear Honorable Members of the City Council:

The Committee on Appointments & Briefings, at a Meeting held on Tuesday, May 17, 2022, considered a COMMUNICATION, Mayor Mitchell, to City Council, submitting AN ORDER for the Re-precincting Plan for the City of New Bedford as required by Massachusetts law (Ref'd 10/14/2021) (11/22/2021 – tabled) (12/08/2021 – Remain in Committee) and a COMMUNICATION, Mayor Mitchell, to City Council, submitting PROPOSED WARD AND PRECINCT LINES. (Ref'd 10/14/2021) (11/22/2021 – tabled) (12/08/2021 – Remain in Committee)

On motion by Councillor Giesta and seconded by Councillor Pereira, the Committee VOTED: To recommend to the City Council to take “No Further Action” on the COMMUNICATION, Mayor Mitchell, to City Council, submitting AN ORDER for the Re-precincting Plan for the City of New Bedford as required by Massachusetts law, and a COMMUNICATION, Mayor Mitchell, to City Council, submitting PROPOSED WARD AND PRECINCT LINES. This motion passed on a voice vote.

IN COMMITTEE ON APPOINTMENTS &
BRIEFINGS

Naomi R. A. Carney

Councillor Naomi R. A. Carney, Chairperson

NRAC: dmb



CITY OF NEW BEDFORD
JONATHAN F. MITCHELL, MAYOR

OFFICE OF THE CITY CLERK
NEW BEDFORD, MA

2021 OCT -7 PM 12:43

CITY CLERK

October 6, 2021

City Council President Joseph P. Lopes
Honorable Members of the City Council
City of New Bedford
133 William Street
New Bedford, MA 02740

Dear Council President Lopes and Honorable Members of the City Council:

I am submitting for your consideration the enclosed Order approving the Re-precincting Plan for the City of New Bedford as required by Massachusetts law.

The proposed New Bedford Re-precincting Plan, also enclosed and titled "Proposed Ward and Precinct Lines," consists of the following:

- A re-precincting map reflecting proposed ward and precinct lines.
- The legal descriptions of the boundaries of the proposed ward and precinct lines depicted on the map.
- New Bedford Block Listing population data from the Federal 2020 Census

As you know, every ten years, following the release of federal census population information, each Massachusetts municipality is legally required to re-draw its voting precinct boundaries based on changes in the municipal population. The Re-precincting Plan which accompanies the Order includes a small number of precinct boundary adjustments based on New Bedford's population change according to the 2020 federal census.

The Plan was initially prepared by the Office of the Secretary of the Commonwealth and provided to an interdepartmental working group comprised of staff from the Planning Department, Elections Office, and Solicitor's Office. Working group staff worked to review and refine the Plan in collaboration with a specialized municipal technical assistance unit of the Office of the Secretary of the Commonwealth. The Re-precincting Plan fully conforms to Massachusetts law and meets the following legal requirements:

- Ward populations are within five percent (5%) of the average ward population for New Bedford;
- Each precinct population is within five percent (5%) of the average precinct population.
- No precinct contains more than 4,000 residents;
- Precincts are “composed of compact and contiguous territory” without protruding fingers or long tails;
- Redrawn boundaries do not result in dilution of minority group members’ votes.

Regrettably, the window for municipal approval is greatly compressed this year, with the necessary 2020 federal census data not being released by the U.S. Census Bureau until August 12, 2021. Only then was the Office of the Secretary of the Commonwealth able to provide to the City a draft map and supporting data--which it did so on September 9, 2021. In sum, Massachusetts municipalities have lost roughly four months from the typical period that municipalities had in the past to complete their work. New Bedford, like other Massachusetts municipalities, has nevertheless worked diligently over the past several weeks to create a fully statutorily compliant plan within the shortened time frame.

I encourage the Council to complete its consideration and approval of the Re-precincting Plan as soon as possible. The Office of the Secretary of the Commonwealth has encouraged municipalities to maintain the process and timeframe for completing their re-precincting plans that were in place prior to the legislation (House Bill 4118) signed into law recently by Governor Baker. [The legislation requires municipalities to obtain approval of their Plan by December 15, 2021 from the state-level oversight body, the Local Election District Review Commission (LEDRC).] The LEDRC has already reviewed and approved more than 80 re-precincting plans submitted by municipalities across Massachusetts, and plans continue to be reviewed and approved by the LEDRC on a weekly basis. Be advised that the LEDRC retains authority to take over reprecincting from municipalities that do not fulfill their requirements under the law within the allotted time, so timely Council action remains important.

Thank you for your consideration

Sincerely,

Jon Mitchell
Mayor

Enclosures



CITY OF NEW BEDFORD

CITY COUNCIL

October 14, 2021

ORDERED, that in accordance with Massachusetts law, the re-precincting plan as submitted by the Mayor on October 6, 2021 and entitled "Proposed Ward and Precinct Lines" is hereby adopted.

Said plan attached hereto and made a part hereof.

Proposed Ward and Precinct Lines

City of New Bedford



Map Prepared for the City of New Bedford
Courtesy of William F. Galvin, Census Liaison
Secretary of the Commonwealth

2020 Population -- 101,079

Minimum %	Target Population	Maximum %
2.668	2,608	2,948

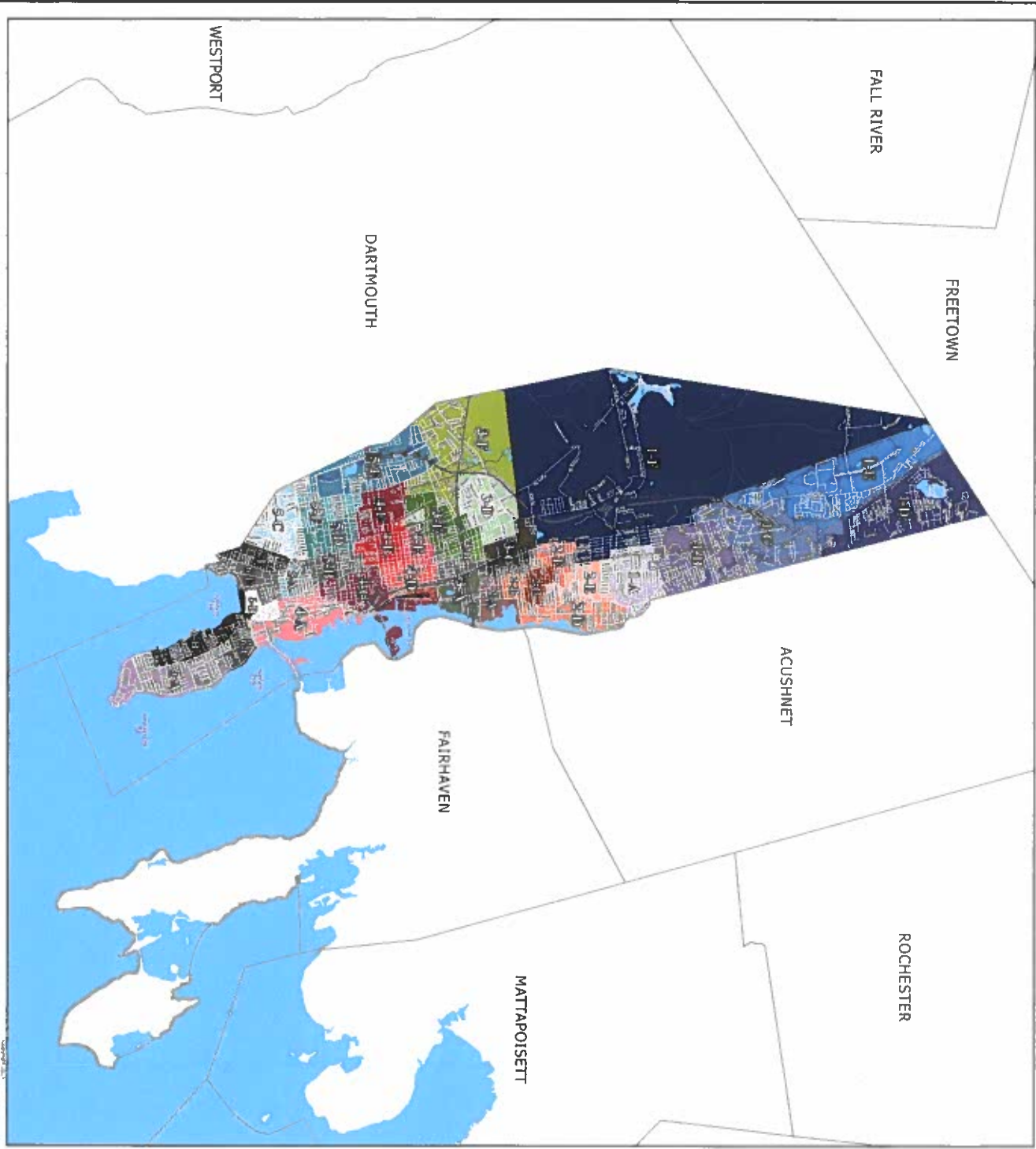
Predict Boundaries New Bedford

Ward / Precinct	2010 Population	Ward / Precinct	2010 Population	2020 Population	Variance
1-A	2,777	4-A	2,771	3,101	324
1-B	2,842	4-B	2,880	2,649	-231
1-C	1,815	4-C	2,669	2,669	0
1-D	1,640	4-D	2,632	2,632	0
1-E	2,777	4-E	2,632	2,632	0
1-F	2,777	4-F	2,632	2,632	0
1-G	2,777	4-G	2,632	2,632	0
1-H	2,777	4-H	2,632	2,632	0
1-I	2,777	4-I	2,632	2,632	0
1-J	2,777	4-J	2,632	2,632	0
1-K	2,777	4-K	2,632	2,632	0
1-L	2,777	4-L	2,632	2,632	0
1-M	2,777	4-M	2,632	2,632	0
1-N	2,777	4-N	2,632	2,632	0
1-O	2,777	4-O	2,632	2,632	0
1-P	2,777	4-P	2,632	2,632	0
1-Q	2,777	4-Q	2,632	2,632	0
1-R	2,777	4-R	2,632	2,632	0
1-S	2,777	4-S	2,632	2,632	0
1-T	2,777	4-T	2,632	2,632	0
1-U	2,777	4-U	2,632	2,632	0
1-V	2,777	4-V	2,632	2,632	0
1-W	2,777	4-W	2,632	2,632	0
1-X	2,777	4-X	2,632	2,632	0
1-Y	2,777	4-Y	2,632	2,632	0
1-Z	2,777	4-Z	2,632	2,632	0
2-A	2,777	5-A	2,632	2,632	0
2-B	2,777	5-B	2,632	2,632	0
2-C	2,777	5-C	2,632	2,632	0
2-D	2,777	5-D	2,632	2,632	0
2-E	2,777	5-E	2,632	2,632	0
2-F	2,777	5-F	2,632	2,632	0
2-G	2,777	5-G	2,632	2,632	0
2-H	2,777	5-H	2,632	2,632	0
2-I	2,777	5-I	2,632	2,632	0
2-J	2,777	5-J	2,632	2,632	0
2-K	2,777	5-K	2,632	2,632	0
2-L	2,777	5-L	2,632	2,632	0
2-M	2,777	5-M	2,632	2,632	0
2-N	2,777	5-N	2,632	2,632	0
2-O	2,777	5-O	2,632	2,632	0
2-P	2,777	5-P	2,632	2,632	0
2-Q	2,777	5-Q	2,632	2,632	0
2-R	2,777	5-R	2,632	2,632	0
2-S	2,777	5-S	2,632	2,632	0
2-T	2,777	5-T	2,632	2,632	0
2-U	2,777	5-U	2,632	2,632	0
2-V	2,777	5-V	2,632	2,632	0
2-W	2,777	5-W	2,632	2,632	0
2-X	2,777	5-X	2,632	2,632	0
2-Y	2,777	5-Y	2,632	2,632	0
2-Z	2,777	5-Z	2,632	2,632	0

Population is based on the official U.S. 2020 Census block-level data.
Boundaries effective December 31, 2021

Legend

- Municipal Boundary
- Geographical Features
- Major Road
- Local Road
- Water
- Other Municipal Features
- Shoreline, Rivers
- Coastal Water, Lakes, Ponds, Major Rivers



Copyright 2021
Boundary of the Commonwealth of Massachusetts