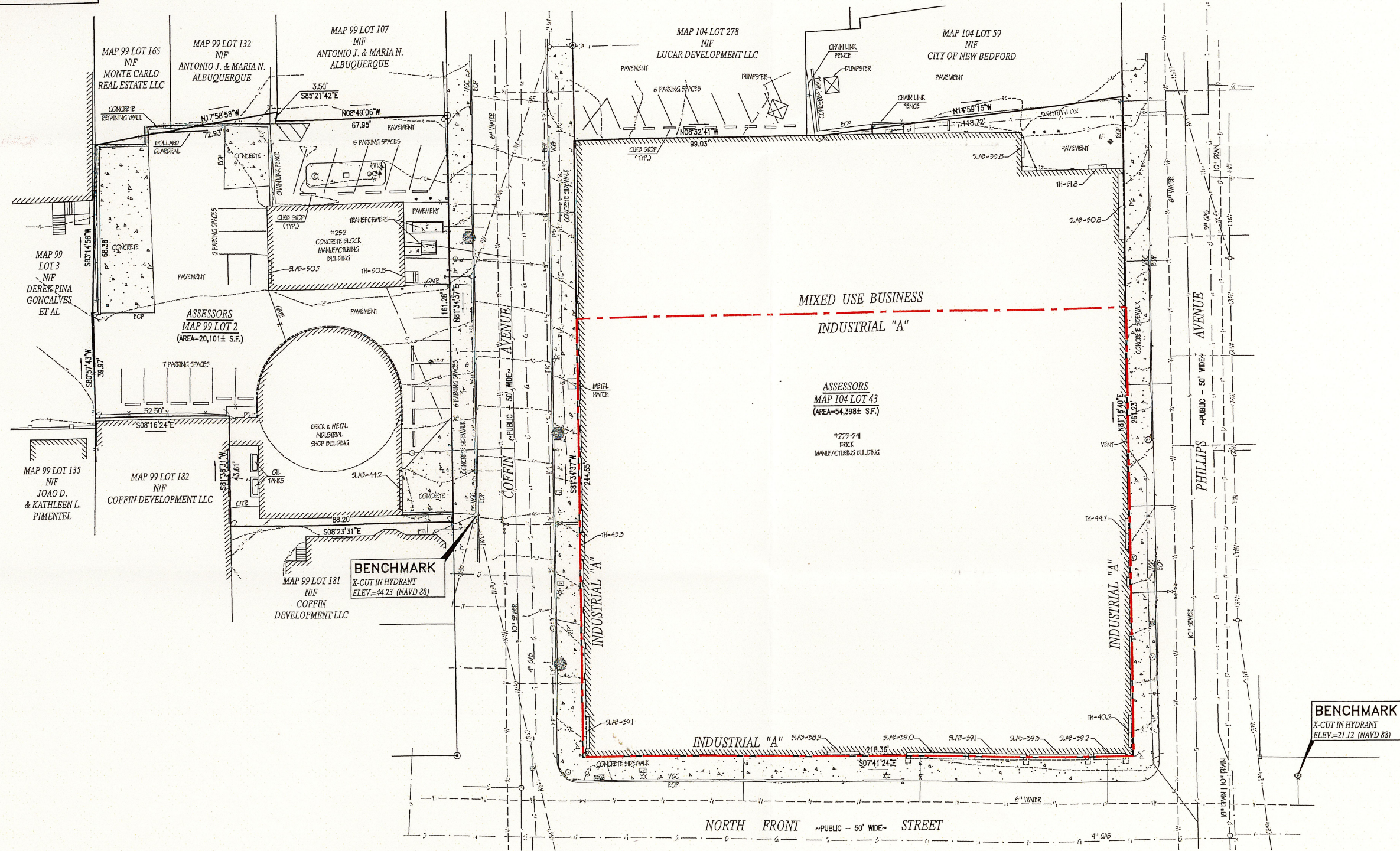
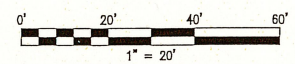


LOCUS MAP SCALE: 1"=2,000'±



NOTES:
 THE PURPOSE OF THIS PLAN IS TO REQUEST A ZONING CHANGE FOR MAP 104 LOT 43 OF THE ISOLATED INDUSTRIAL "A" ZONE TO THE MIXED USE BUSINESS ZONE THAT EXISTS FOR THE REMAINDER OF THE BLOCK TO THE WEST.



REVISIONS



Handwritten signature of Christian Albert Farland.



www.FarlandCorp.com

21 VENTURA DRIVE
 DARTMOUTH, MA 02747
 P.508.717.3479
 • ENGINEERING
 • SITEWORK
 • LAND SURVEYING
 • DEVELOPMENT

DRAWN BY: NPD
 DESIGNED BY: -
 CHECKED BY: -

RE-ZONING PLAN
 229-241 COFFIN AVENUE
 ASSESSORS MAP 104 LOT 43
 NEW BEDFORD, MASSACHUSETTS
 PREPARED FOR:
 PARALLEL PRODUCTS SOLAR ENERGY, LLC
 401 INDUSTRY DRIVE, SUITE 100
 LOUISVILLE, KY 40208

DECEMBER 13, 2022
 SCALE: 1"=20'
 JOB NO. 22-190
 LATEST REVISION:

ZONING PLAN
 SHEET 1 OF 1